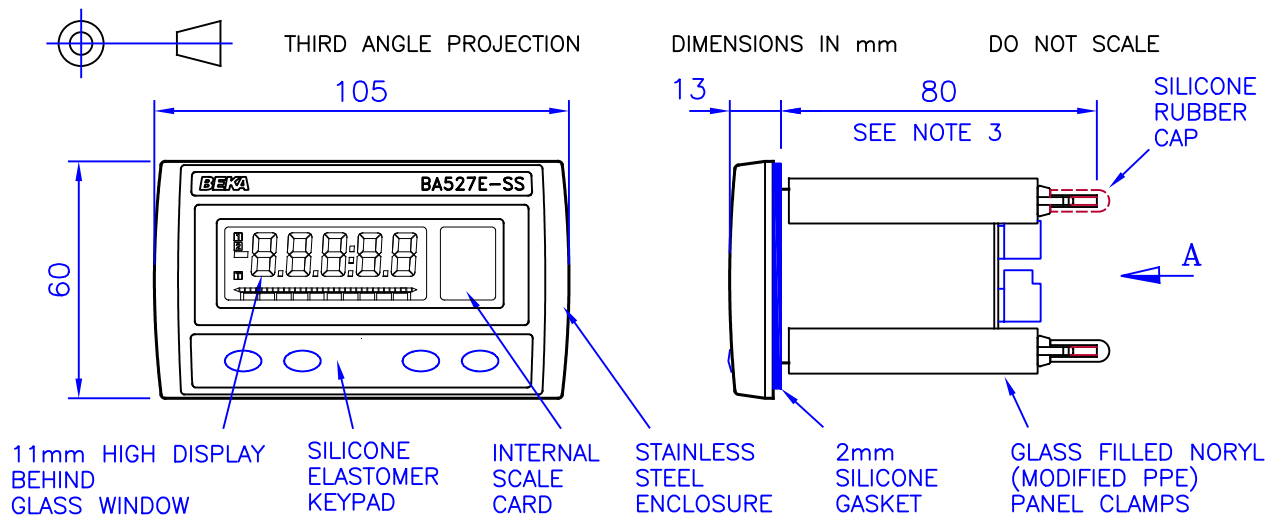
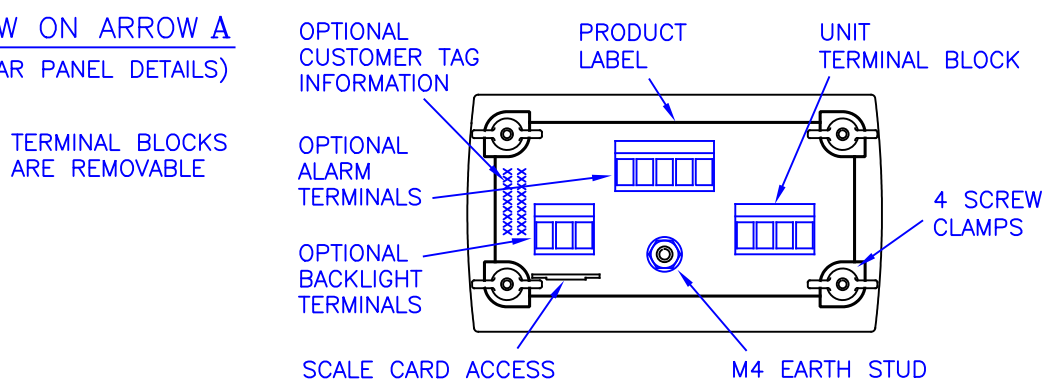


Iss.	1	Date	16.12 2014	Modification	First release under project P0170.	Ckd.		Appd.	
Iss.	2	Date	10.05 2017	Modification	CRN1652 Panel cut-out updated. CRN1617 Rubber cap added.	Ckd.		Appd.	
BEKA associates Hitchin England company confidential, copyright reserved.									
Iss.	3	Date	15.05 2019	Modification	CRN1791. Remove reference to I.S.	Ckd.		Appd.	



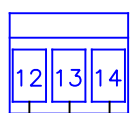
VIEW ON ARROW A (REAR PANEL DETAILS)



TERMINAL CONNECTIONS:

OPTION TERMINALS (WHEN OPTION FITTED):

BACKLIGHT

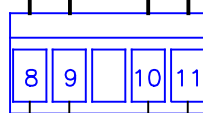


SEPARATELY POWERED

LOOP POWERED

COMMON

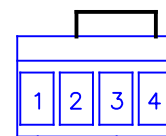
ALARMS



ALARM 1

ALARM 2

UNIT TERMINALS



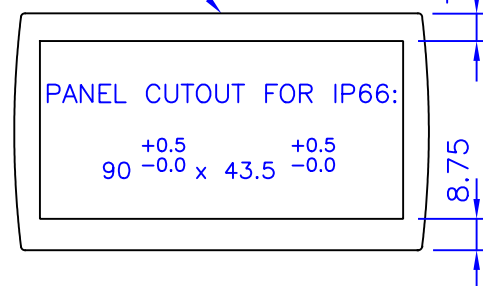
4/20mA

TERMINALS 2 & 4 ARE INTERNALLY LINKED FOR JOINING RETURN WIRES

INSTALLATION:

- 1 INSERT UNIT INTO PANEL CUTOUT FROM FRONT.
- 2 SCREW CLAMPS ARE FITTED OVER THE 4 STUDS & THE WING NUTS TIGHTENED FROM REAR OF PANEL. RECOMMENDED TORQUE 22cNm MIN.
- 3 FOR PANELS GREATER THAN 3mm THICK ADD ADDITIONAL DEPTH FOR CLAMPS. (ie ADD PANEL THICKNESS LESS 3mm)
- 4 FINALLY, FIT A SILICONE RUBBER CAP TO THE END OF EACH M3 THREADED ROD.

BEKA BEZEL



Title

CUSTOMER DRAWING for
BA527E-SS 5 DIGIT INDICATOR
IN PANEL MOUNTING ENCLOSURE

Drawn KB

Checked .

Scale NTS

Drawing No. CD527E-SS